

Astra



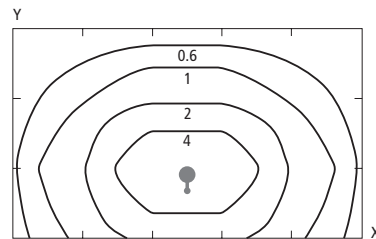
The Astra fluorescent is specifically designed to residential road lighting standards. Built with a cast aluminium body and clear acrylic diffuser, Astra offers low energy consumption and low maintenance.

Applications

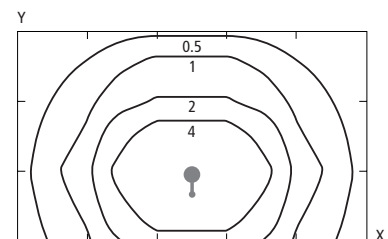
- Minor Roads
- Marinas
- Garden Areas
- Conveyors
- Parklands
- Security
- Walkways
- Driveways



Photometric design data



Horizontal illumination – Astra AST218HSE
 Mounting height – 5.0m Area – 25m x 15m
 X increments = 5.0m Y increments = 5.0m
 plain height = 0.0m Aiming angle – 5°
Windage – 0.117 m² Weight – 2.82 kg

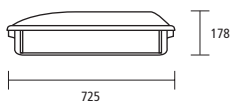


Horizontal illumination – Astra AST218LAER
 Mounting height – 5.0m Area – 25m x 15m
 X increments = 5.0m Y increments = 5.0m
 plain height = 0.0m Aiming angle – 5°
Windage – 0.062 m² Weight – 2.52 kg

Wired to AS3137 and EMC approved
 Fits 25mm nominal bore pipe bracket.
 PE model complete with PE cell.



102



Product reference

Lamp ordered separately

AST218HSE	2 x 18W	HPF
AST218HSEPB	PC 2 x 18W	HPF

AST218LAER	2 x 18W	LPF
AST218HSEPE	2 x 18W	HPF