

Defender MK2



Defender MK2 is a robust weatherproof light fixture for adverse location lighting. A polycarbonate body, injection moulded prismatic diffuser and stainless steel fixing clips, offer impact resistant non corrosive qualities.

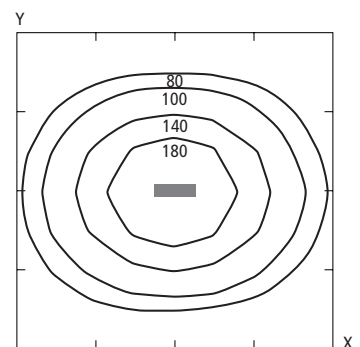
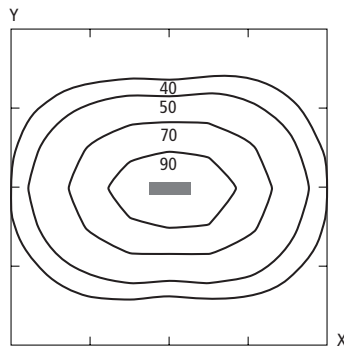
Suitable for ceiling and wall mount or chain suspension.

Applications

- Canning Plants
- Coal Washing Plants
- Workshops
- Abattoirs
- Cool Rooms
- Pigeries



Photometric design data

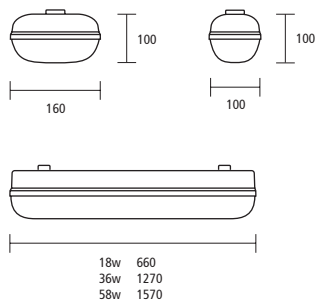


Horizontal illumination – Defender MK2 DEF136HLL

Ceiling height – 2.7m Area – 4m x 4m
 X increments = 1.0m Y increments = 1.0m
 Plain height = 0.85m
 No allowance made for wall or ceiling reflectances.

Horizontal illumination – Defender MK2 DEF236HLL

Ceiling height – 2.7m Area – 4m x 4m
 X increments = 1.0m Y increments = 1.0m
 Plain height = 0.85m



Wired to AS3137 and EMC approved
 Low Loss Ballast

Product reference

Supplied complete with lamp

DEF118HLL	18W	HPF
DEF136HLL	36W	HPF
DEF136HLLM2	36W	maint. emergency
DEF158HLL	58W	HPF
DEF158HLLM2	58W	maint. emergency

Emergency Lighting Classification

AS2293	C0°	C90°
DEF136HLLM2	B63	B63
DEF236HLLM2	C63	B63

DEF218HLL	18W	HPF
DEF218HLLM2	18W	maint. emergency
DEF236HLL	36W	HPF
DEF236HLLM2	36W	maint. emergency
DEF258HLL	58W	HPF
DEF258HLLM2	58W	maint. emergency